

## 2 SETS WITH COVE + 2 SETS STILL LIFE

- . 2500 m<sup>2</sup> total
- . 4 sets in 1000 m<sup>2</sup>
- . Garage 1000 m<sup>2</sup> with truck access
- . Open space 200 m<sup>2</sup> on ground floor
- . Open space with pantry 230 m<sup>2</sup> upstairs

### . Set A (egg type) :

Power supply :  
1 x 125A – 5 x 63A – 6 x 32A  
Five-walled cove of 17x16 m  
Cove's height : 5,50 m

### . Set B :

Power supply :  
1 x 125A – 4 x 63A – 6 x 32A  
Three-walled cove of 17 x16 m  
Cove's height : 7,50 m  
Useful height : 8 m  
Lighting rigging possibilities  
(cf plan on the next page)

### . Set C :

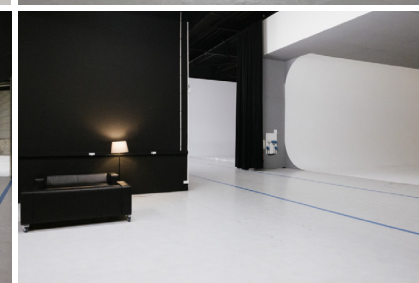
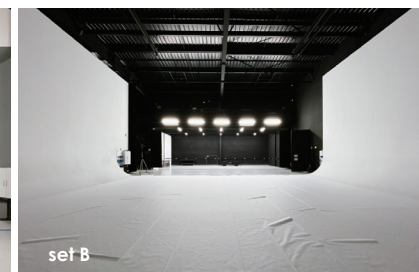
Area of 9 x 16 m (150 m<sup>2</sup>)  
Power supply : 2 x 63A  
Useful height : 4,5 m

### . Set D :

Area of 9 x 10 m (90 m<sup>2</sup>)  
Power supply : 2 x 63A  
Useful height : 4,5 m  
Water inlets / mobile sink

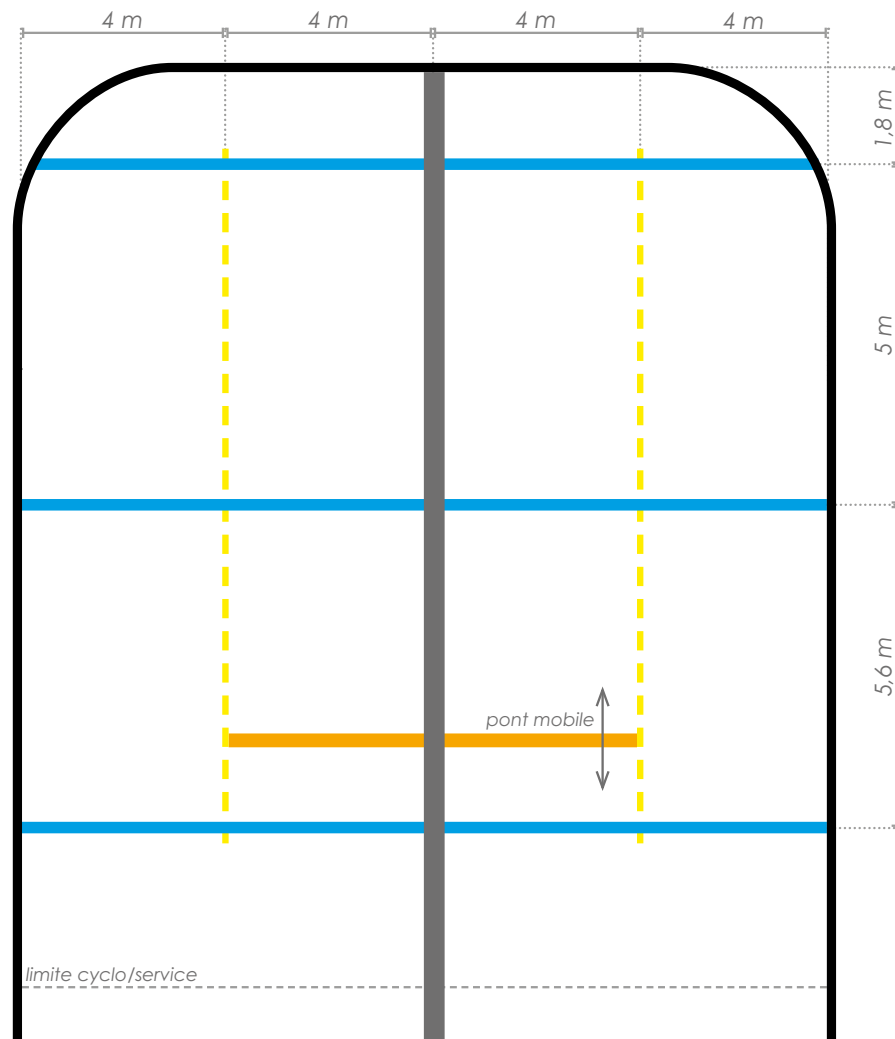
## STUDIO EQUIPMENT

5 sofas - 2 coffee tables - 6 big rolling tables  
2 cloth racks - 1 large fridge - 2 rolling make-up stations  
20 tables - 100 chairs

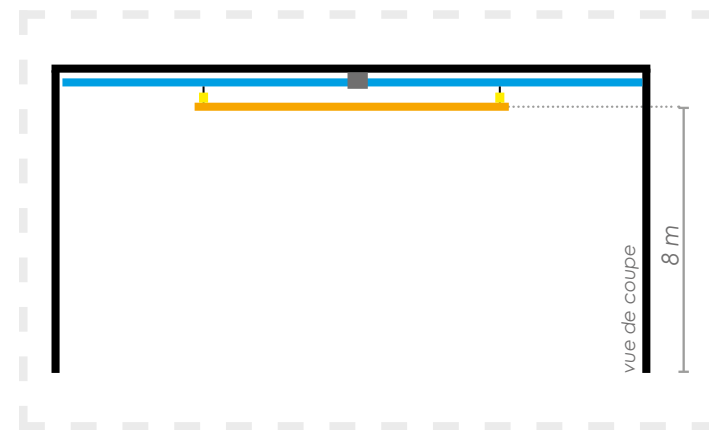





[Link to the website](#)





## PLAN ACCROCHES ANNEXE - PLATEAU B



-  CMU : 500kg tous les 1 mètres ou 1,5 tonnes en 1 point
-  CMU : 500kg en 1 point
-  rails pour IPN motorisé CMU 250kg en 1 point

[Link to the website](#)

