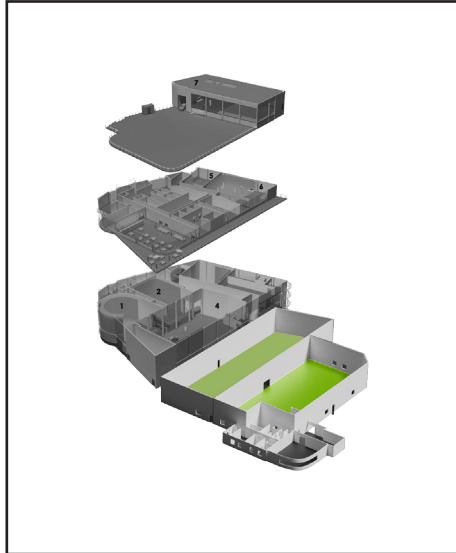


# FACTORY (NEW)



1400 m<sup>2</sup>



## THE HALLES - 2 X 700M (2,6X2296,6FT)

- Hall 1 : 38,5 x 19m (126,3 x 62,3ft)  
Hall 2 : 46 x 15m (151 x 49,2ft)
- Useful height : 5,70m (18,7ft)
- Drive-in access to truck 2 doors :  
H : 3,55m et l : 3,90m (H : 11,6ft and l : 12,8ft)
- Private Parking
- Water supply
- Power supply : 400amp - 2 x 110 kw,  
three phase Marechal outlets  
(2 x 125A and 3 x 63A)

