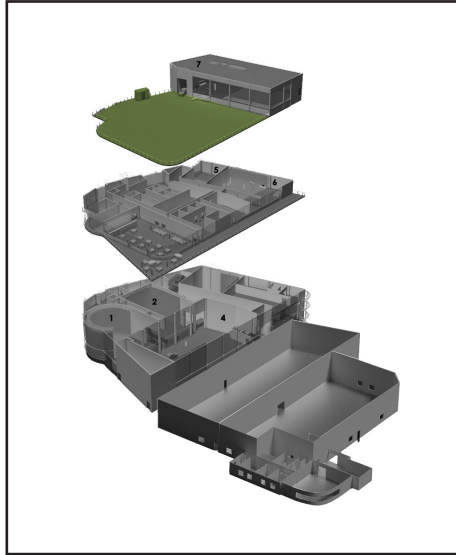


ROOF TOP



1000 m²



ROOF TOP, 38 x 29 M

- 38 x 29 m (124.7x95ft)
- 14 meters height
- Car access by lift (6x2.4x2.2m / 19.7x7.9x7.2ft)
- Removable barriers
- Water supply
- Power supply : 160amp – 100kw, three phase Marechal outlets (1 x 125A – 1 x 63A)

