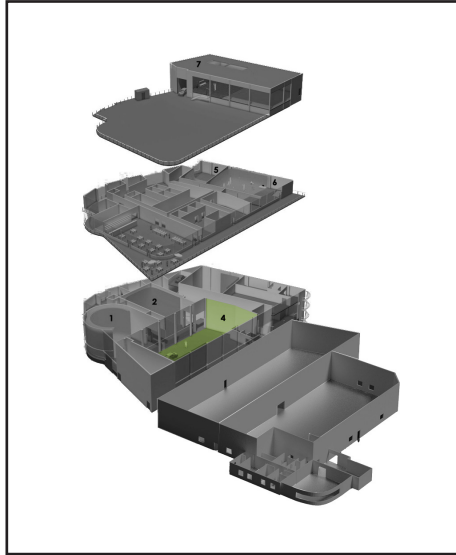


STUDIO 4



480 m²



RECTANGULAR COVE, 30 x 16 M

- 30 x 16m (98.4 x 52.5 ft)
- Useful height : 8m (26.2ft)
- Lighting rigging possibilities
- Dressing room (120m² on 3 levels)
- Drive-in access cars to truck 30m³ (12.5 x 17.7 ft)
- 2 water inlets
- Power supply : 400amp – 250kw, three phase Marechal outlets (1 Power Lock 400amp – 2 x 125amp + 1 x 63amp – 1 x 63amp)
- Reversible climate control

