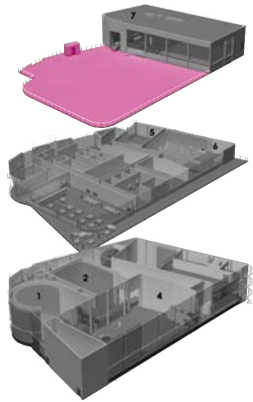


terrace



- . 1000 m²
- . 38 x 29 m (124.7 x 95ft)
- . 14 meters height
- . Car access by lift (6x2.4x2.2m / 19.7x7.9x7.2ft)
- . Removable barriers
- . Water supply
- . Power supply : 160amp - 100kw,
three phase Marechal outlets (1 x 125A - 1 x 63A)

