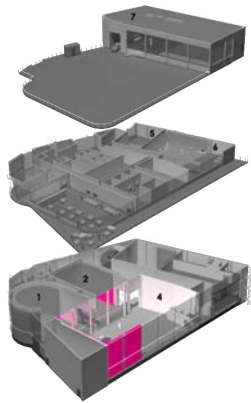


# studio 4



- . 480 m<sup>2</sup>
- . 30 x 16m (98.4 x 52.5 ft)
- . Useful height : 8m (26.2ft)
- . Lighting rigging possibilities
- . Dressing room (120m<sup>2</sup> on 3 levels)
- . Drive-in access truck up to 30m<sup>3</sup> (w3.8xh4.5m / 12.5 x 17.7 ft)
- . 2 water inlets
- . Power supply : 400amp - 250kw, three phase Marechal outlets (1 Power Lock 400amp - 2 x 125amp + 1 x 63amp - 1 x 63amp)

