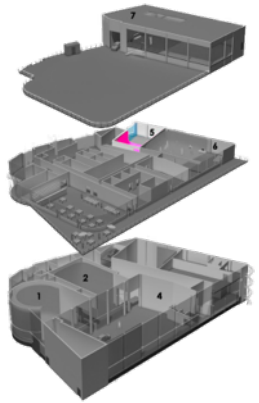


studio 5



- . 115m²
- . **Two-walled cove**, 6.5 x 7m (21.3 x 23ft)
- . 9 x 13m clearance (29.5 x 42.6 ft)
- . Useful height : 5.5m (18ft)
- . windows with blackout curtains (w4.2xh5.6m / 13.8 x 18.4 ft)
- . balcony access
- . Power supply : 63amp - 40kw, three phase Marechal outlets (1 x 63A)
- . Rate : 600€ per day – 450€ for half a day

